



Form 170.500-SPL (MAR 2024)

Service Parts List

File: Service Manual - Section 170

Supersedes: 170.500-SPL (FEB 2024)

IPAC-S

Inline Packaged Ammonia Chiller

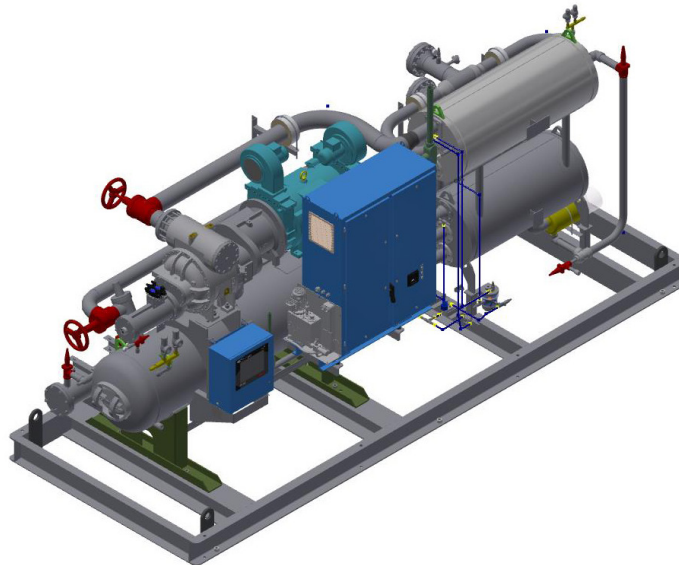




Table of contents

Using the service parts list..... 2
Recommended spare parts - current design..... 3
Numerical parts list 7

Figures

Figure 1: Process and instrumentation diagram 6

Using the service parts list

This service parts list is for standard Frick® IPAC-S Inline Packaged Ammonia Chiller Systems.

This service parts list provides identification for detail parts by figure and index number, item number, and description. To determine correct replacement, complete the following steps:

1. Locate an item on a figure.
2. Note the index number.
3. Refer to the corresponding index number in the parts list for the item number and description.

The quantity for each assembly is shown in the Qty. column, which is 1 unless specified otherwise. Ref. in the Qty. column indicates that the item number is for reference only and is not necessarily a service replacement part. Contact Baltimore Parts Center for more information. Rev. (Revision) column shows the level of the engineering drawing used. The P and I (piping and instrumentation) Ref. column gives the number of the item as shown on the P and I drawing.

Use the numerical parts list to locate a specific item in the service parts list. Look for the part by using the Frick item number, which refers you to the part's specific figure and index number.

See the following list of abbreviations:

A/R as required Ref.reference Qty..... quantity

Note: Provide the order number, unit model number, and unit serial number when requesting a quotation or placing an order. Failure to include this information may delay processing of your request. This information is listed on the unit data plate, attached to the frame below the compressor.

Recommended spare parts - current design

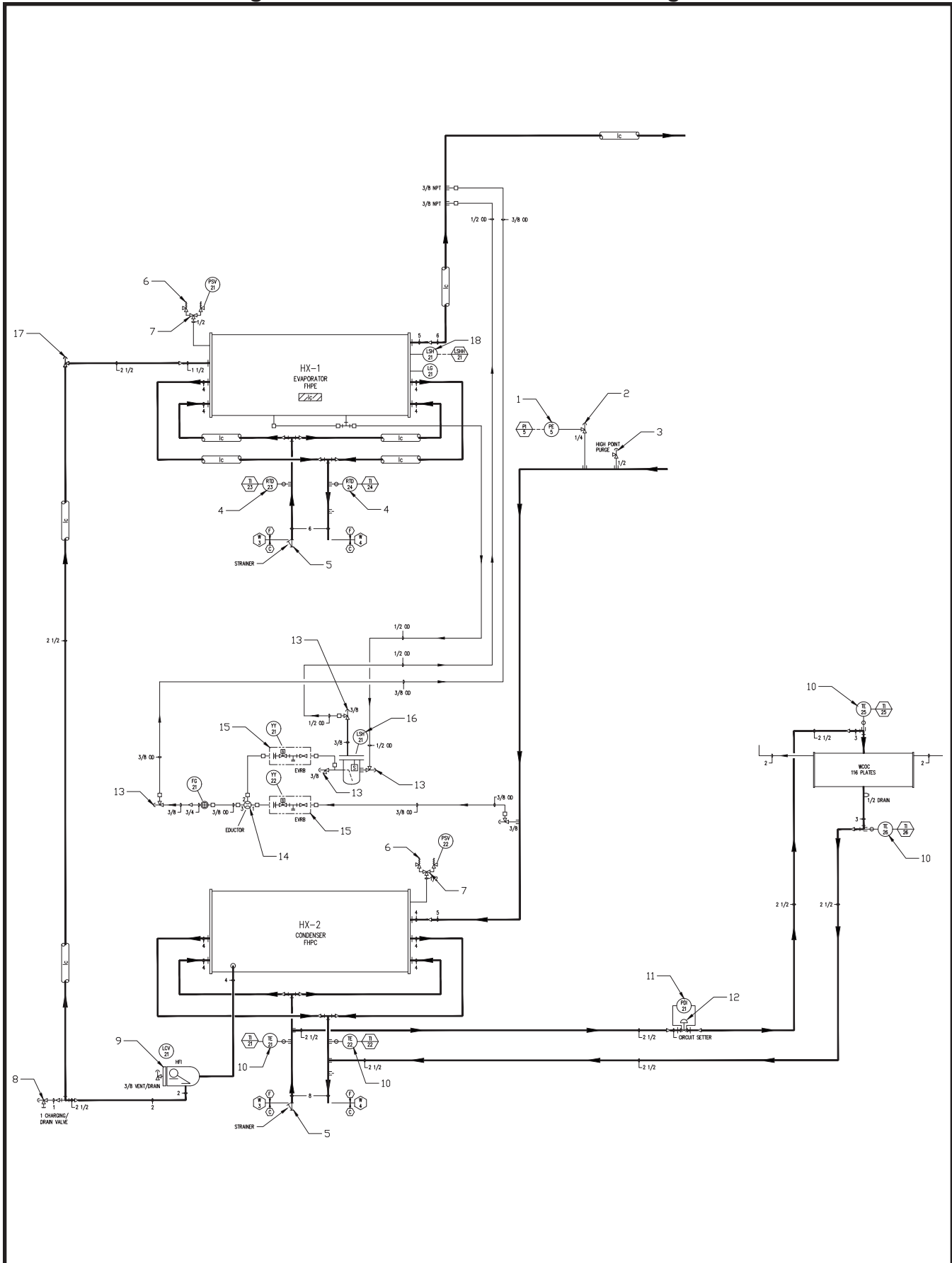
Description	Quantity	SKU	Part number
Spare parts kit, overhaul (less stem), 1 in.	1		950A0353H32
Spare parts kit, repair, 1 in.	1		950A0353H42
Spare parts kit, inspection, 1 in.	1		950A0353H22
Spare parts kit, seal cap and gasket, 1 in.	1		950A0354H62
Spare parts kit, overhaul (less stem), 1.5 in.	1		950A0353H32
Spare parts kit, repair, 1.5 in.	1		950A0353H42
Spare parts kit, inspection, 1.5 in.	1		950A0353H22
Spare parts kit, seal cap and gasket, 1.5 in.	1		950A0354H62
Spare parts kit, overhaul (less stem), 2 in.	1		950A0353H33
Spare parts kit, repair, 2 in.	1		950A0353H43
Spare parts kit, inspection, 2 in.	1		950A0353H23
Spare parts kit, seal cap and gasket, 2 in.	1		950A0354H62
Spare parts kit, overhaul (less stem), 2.5 in.	1		950A0357H34
Spare parts kit, repair, 2.5 in.	1		950A0357H44
Spare parts kit, inspection, 2.5 in.	1		950A0357H24
Spare parts kit, seal cap and gasket, 2.5 in.	1		950A0354H62
Service kit, HFI 040	1		953A0028H08
Service kit, HFI 050	1		953A0028H09
Service kit, HFI 060	1		953A0028H10
Service kit, HFI 070	1		953A0028H11

Note: Refer to the compressor package service parts list for additional items.

Fig. and index	Part number	Description	Qty.	Rev.	P and I ref.
1	913A0150H05	Pressure transducer 0-500 psia	1		PE-5
	649A0890H02	Connector, DIN, conduit	1		
	649A0890H11	Gasket, DIN connector	1		
	950A0292H01	Relief, strain, 1/2 in.	1		
2	950A0292H01	Valve, angle, needle, SC, 1/4 in. MPT x 1/4 FPT	1		
3	950A0292H03	Valve, angle, needle, SC, 1/2 in. MPT	1		High Point Purge
4	639A0197H03	RTD Assembly, 100 Ohm platinum	2		RTD-23 RTD-24
	639A0197H23	RTD Transmitter	2		
	639A0197H31	RTD Sensor	2		
5	950A0415H03	Strainer, BW, 4 in., 500 Micron	2		Strainer
	950A0415H04	Strainer, BW, 5 in., 500 Micron	2		
	950A0415H05	Strainer, BW, 6 in., 500 Micron	2		
	950A0415G01	Strainer, BW, 8 in., 500 Micron	2		
	950A0424H01	Strainer, flanged, 10 in., 500 Micron	2		
6	952A0098H04	Valve, safety, parker SR1, 300 psig setpoint	4		PSV-21 PSV-22
7	955B0005H01	Valve, three-way, 1/2 in.	2		
8	950A0354H03	Valve, angle, 1 in. SW, SC	1		Charge/ Drain Valve
9	953A0028H01	Float expansion valve, HFI 040	1		LCV-21
	953A0028H02	Float expansion valve, HFI 050	1		
	953A0028H03	Float expansion valve, HFI 060	1		
	953A0028H04	Float expansion valve, HFI 070	1		
	953A0028G01	Float expansion valve, HFI 080	1		
10	639A0151G01	Assembly, temperature sensor	4		TE-21, TE-22, TE-25, TE-26
	639A0151H01	Temperature sensor probe, less well	4		

Fig. and Index	Part Number	Description	Qty.	Rev.	P and I ref.
	913A0098H01	Thermowell	4		
	913A0100H01	Thermal compound	4		
	649A0890H02	Connector, DIN, conduit	4		
	649A0890H11	Gasket, DIN cconnector	4		
11	990A0149H01	Gauge, pressure differential	1		PDI-21
12	950A0414H01	Valve, circuit balancing, 1.25 in.	1		Circuit Setter
	950A0414H02	Valve, circuit balancing, 1.5 in.	1		
	950A0414H03	Valve, circuit balancing, 2 in.	1		
	950A0414H04	Valve, circuit balancing, 2.5 in.	1		
	950A0414H05	Valve, circuit balancing, 3 in.	1		
13	950A0292H02	Valve, angle, needle, SC, 3/8 in. MPT x 3/8 FPT	1		
14	720A0041H03	Eductor, oil return	1		Eductor
15	720A0041H02	Valve station, EVRB (110 VAC coil)	2		YY-21 YY-22
16	720A0041H01	Level switch, oil	1		LSH-21
17	950A0354H05	Valve, isolation, 1.5 in.	1		IPAC-S 24 IPAC-S 68
	950A0354H06	Valve, isolation, 2 in.	1		IPAC-S 85 IPAC-S 101
	950A0358H07	Valve, isolation, 2.5 in.	1		IPAC-S 134 IPAC-S 222
18	913A0165H01	Level switch, R717	1		LSH-22

Figure 1: Process and instrumentation diagram



Part number	Fig. and index no.	Part number	Fig. and index no.	Part number	Fig. and index no.
913A0150H05	1	720A0041H02	15		
950A0292H01	2	720A0041H01	16		
950A0292H03	3	950A0354H05	17		
639A0197H03	4	913A0165H01	18		
950A0415H03	5				
952A0062H10	6				
955B0005H01	7				
950A0354H03	8				
953A0028H01	9				
639A0151G01	10				
990A0149H01	11				
950A0414H01	12				
950A0292H02	13				
720A0041H03	14				

Form 170.500-SPL (2024-03)
Supersedes: 2024-02
Subject to change without notice
Published in USA · 03/24 · PDF
© 2024 Johnson Controls - All Rights Reserved



Johnson Controls
100 Cumberland Valley Avenue
Waynesboro, PA 17268-1206 USA
Phone: 717-762-2121 · FAX: 717-762-8624
www.johnsoncontrols.com/Frick